

Fitting Instructions

Revo Torque Mount Kit Fiesta MK7

Fitting Difficulty



Contents

Description	
Revo Rear Mount	1

Recommended Tools

Tools	Size
Ratchet	
Extention	
Socket	13mm
Copper Grease	



Before starting, please ensure that the engine is cool. Engine temperatures can remain high for a substantial amount of time after use.



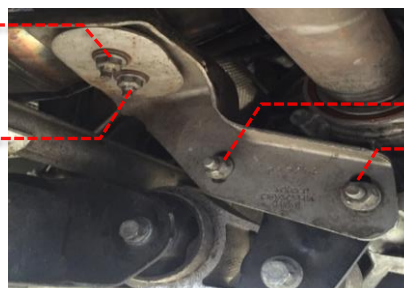
Fitting Instructions

Revo Torque Mount Kit Fiesta MK7

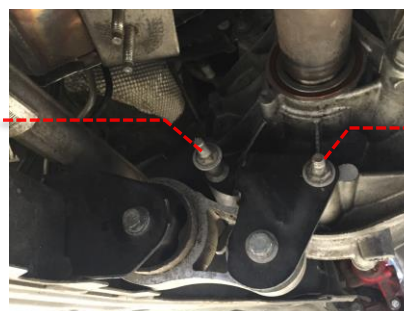
Fitting Difficulty



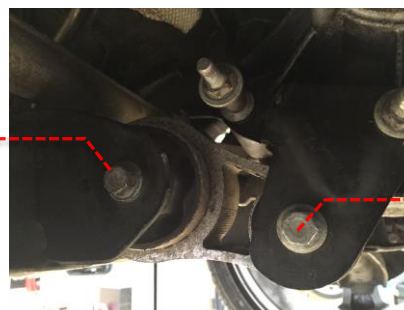
- 1 Remove the 4 x 13mm nuts shown and remove the bracket.



- 2 Loosen the 2 x 13mm nuts holding the black plate at the side of the mount. Note: you do not need to remove this and loosening it will be fine.



- 3 Remove the rear bolt from the mount first then the front and remove the mount from the car.



- 4 Apply a small amount of copper grease to the outside of the large bushes and install the new Revo mount. Install the rear bolt first finger tight and then the front. Tighten the rear bolt to 52Nm and the front bolt to 47Nm. Reinstall the other bracket you removed in the reverse and tighten all 4 nuts. Reinstallation is the reverse of removal. Follow any factory torque specification during reinstallation of OE parts. Test drive the vehicle to ensure everything is okay. Your installation is now complete!



* Dealer note: please hand the "Assembly Sheet" to the customer to retain for their records.